

05

ANTICHISPA
NON-SPARKING
ANTIDÉFLAGRANT
FUNKENFREI
ANTISCINTILLA
ANTI-DEFLAGRANTE
ИСКРОБЕЗОПАСНЫЙ



■ **HERRAMIENTA PARA TUBO / PIPE TOOLS / OUTILLAGE TUBE / ROHR WERKZEUGE / FERRAMENTI PER TUBI / FERRAMENTA PARA TUBOS / ТРУБНЫЕ КЛЮЧИ**

■ **LLAVE HEAVY DUTY / HEAVY DUTY PIPE WRENCH / CLÉ SERRE-TUBES H.D. / EINHAND-ROHRZANGEN / GIRATUBI MODELLO AMERICANO PESANTE / CHAVE HEAVY DUTY / ТРУБНЫЙ КЛЮЧ ДЛЯ ТЯЖЕЛЫХ РАБОТ**

COD.	MAT.	COD.	MAT.	L (inch)	CAP. (inch)	Kg
70121	Cu-Be	71458	Al-Bron	8	1	0,3
70122		71459		10	1.1/2	0,8
70123		71460		12		1,3
70124		71461		14	2	1,7
70125		71462		18	2.1/2	2,6
70126		71463		24	3	4,5
70127		71464		36	5	9,0
70128		71465		48	6	16



■ **LLAVE PICO PATO / OFFSET PIPE WRENCH 90° / CLÉ SERRE TUBE 90° / ECKROHRZANGE 90° / GIRATUBO 90° / CHAVE BICO DE PATO / КОЛЕНЧАТЫЙ ТРУБНЫЙ КЛЮЧ**

COD.	MAT.	COD.	MAT.	L (inch)	CAP. (mm)	Kg
36305	Cu-Be	36310	Al-Bron	8	34	0,5
36306		36311		10	48	0,8
36307		36312		12	50	1,1
36308		36313		15	60	1,9
36309		36314		18	76	2,6



■ **LLAVES SUECAS / SWEDISH PIPE WRENCHES / CLÉS SERRE-TUBES SUEDOISES / ECKROHRZANGE / GIRATUBI MOD. SUEDESE / CHAVES PARA TUBOS SUECAS / ТРУБНЫЕ ШВЕДСКИЕ КЛЮЧИ**

■ **LLAVE SUECA 45° / SWEDISH PIPE WRENCH 45° / SERRE-TUBES SUEDOISE 45° / ECKROHRZANGE 45° / GIRATUBI MOD. SUEDESE 45° / CHAVE SUECA 45° / ШВЕДСКИЙ КЛЮЧ S 45°**

COD.	MAT.	COD.	MAT.	CAP. (inch)	L (mm)	Kg
70129	Cu-Be	71466	Al-Bron	1.1/2	420	1,4
70130		71467		2	550	2,5
79821		79824			700	4,5



■ **LLAVE SUECA 90° / SWEDISH PIPE WRENCH 90° / CLÉ SERRE-TUBES SUEDOISE 90° / ECKROHRZANGE 90° / GIRATUBI MOD. SVEDESE 90° / CHAVE SUECA 90° / ТРУБНЫЙ ШВЕДСКИЙ КЛЮЧ 90°**

COD.	MAT.	COD.	MAT.	CAP. (inch)	Kg
79822	Cu-Be	79825	Al-Bron	2	2,5
79823		79826		3	4,5



■ **LLAVE SPUD / SPUD PIPE WRENCH / CLÉ SPUD / VERSTELLBARE ROHRZANGE / GIRATUBI MODELLO SPUD / CHAVE PARA TUBO SPUD / ТРУБНЫЙ КЛЮЧ С ПАРАЛЛЕЛЬНЫМИ ГУБКАМИ**

COD.	MAT.	COD.	MAT.	L (inch)	CAP. (mm)	Kg
71822	Cu-Be	71823	Al-Bron	12	58	1,2



■ **LLAVE DE CORREA / STRAP WRENCH / CLÉ À SANGLE / GURTRÖHRZANGE / GIRATUBI A NASTRO / CHAVE DE CORREIA / РЕМШКОВЫЙ КЛЮЧ**

COD.	MAT.	COD.	MAT.	L (mm)	CAP. (inch)	g
73906	Cu-Be	73907	Al-Bron	300	3	800



Cu-Be Cobre berilio / Beryllium copper / Cúivre beryllium / Kupfer beryllium / Koper beryllium / Rame-berillio / Сплав Медь Бериллий
Al-Bron Aluminio bronze / Aluminium bronze / Alliage aluminium-bronze / Alliage aluminium-bronze / Aluminium brons / Aluminio bronzo / Сплав Алюминий Бронза

Si no encuentra el artículo que necesita, consúltenos en info@egamaster.com o en www.egamaster.com
 If you can't find the item you look for, please ask us in info@egamaster.com or in www.egamaster.com
 Si vous ne trouvez pas l'article que vous desirez, consultez-nous a info@egamaster.com ou a www.egamaster.com

EGA Master
 ART IN INNOVATION

235

05

ANTICHISPA
NON-SPARKING
ANTIDÉFLAGRANT
FUNKENFREI
ANTISCINTILLA
ANTI-DEFLAGRANTE
ИСКРБЕЗОПАСНЫЙ



■ LLAVE DE CADENA / CHAIN PIPE WRENCH / CLÉ À CHAÎNE / KETTEN-ROHRZANGE / GIRATUBI A CATENA / CHAVE CORRENTE / ЦЕПНОЙ КЛЮЧ

COD.	MAT.	COD.	MAT.	L (mm)	CAP. (inch)	Kg
72976	Cu-Be	72977	Al-Bron	600	4	3,8
72978		72979			6	4,2
72980		72981		900	8	8,5
72982		72983			12	9,5



COD.	MAT.	COD.	MAT.	L (mm)	CAP. (inch)	Kg
70131	Cu-Be	71468	Al-Bron	600	2	2,2
70132		71469			4	2,8
70133		71470			6	3,5



■ CORTATUBOS / PIPE CUTTER / COUPE-TUBES / ROHRABSCHNEIDER / TAGLIATUBI / CORTA TUBOS / ТРУБОРЕЗ ДЛЯ СТАЛИ

COD.	MAT.	COD.	MAT.	L (mm)	CAP. (inch)	H (mm)	Kg
70134	Cu-Be	71471	Al-Bron	380	2	60	2,4

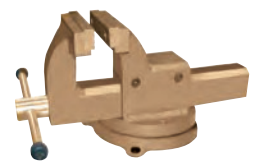


COD.	MAT.	COD.	MAT.	L (mm)	CAP. (inch)	H (mm)	Kg
74327	Cu-Be	74330	Al-Bron	740	4-6	280	12,3
74340		74343		860	8-12	465	21

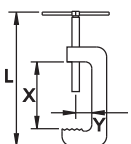


■ TORNILLO DE BANCO PARALELO / PARALLEL BENCH VICE / ÉTAU À MORS PARALLELES / PARALLELSCHRAUBSTÖCKE / MORS DA BANCO PARALLELA / TORNO DE BANCADA PARALELO / СЛЕСАРНЫЕ ТИСКИ

COD.	MAT.	COD.	MAT.	inch	mm	Kg
70482	Cu-Be	71636	Al-Bron	4	100	15
70483		71637		5	140	18
70486		72191		6	150	27
70487		72192		7	170	28



■ PRENSA / CLAMP / PRESSE / KNEBEL / MORSETTO / PRENSA / СТРУБЦИНА



COD.	MAT.	COD.	MAT.	L (mm)	X	Y	g
72478	Cu-Be	72479	Al-Bron	210	60		1200
72480		72481		250	80	36	1400
72482		72483		290	100		1600
72484		72485		340	150	50	2000
73418		73425		400	250	150	4900



■ SARGENTOS / CLAMPS / SERRE-JOINTS / ZWINGEN / MORSETTI SERRAGIUNTI / GRAMPOS / СТРУБЦИНЫ

■ MOD. F

COD.	MAT.	COD.	MAT.	CAP. (mm)	g
74250	Cu-Be	74251	Al-Bron	400	2200



Cu-Be Cobre berilio / Beryllium copper / Cuivre beryllium / Kupfer beryllium / Koper beryllium / Rame-berillio / Сплав Медь Бериллий
Al-Bron Aluminio bronze / Aluminium bronze / Alliage aluminium-bronze / Alliage aluminium-bronze / Aluminium brons / Aluminio bronzo / Сплав Алюминий Бронза